



£900

## Rowlands Road, Worthing

- One Bed Garden Flat
- Double Glazed
- Recently Redecorated
- EPC Rating - D
- Excellent Location
- Separate Kitchen
- Available Now
- Council Tax Band - A

Robert Luff & Co are delighted to off this recently refurbished, 1 bed garden flat in a fantastic location. The accommodation comprises of living room, bedroom, separate kitchen, bathroom and patio garden.

AVAILABLE NOW

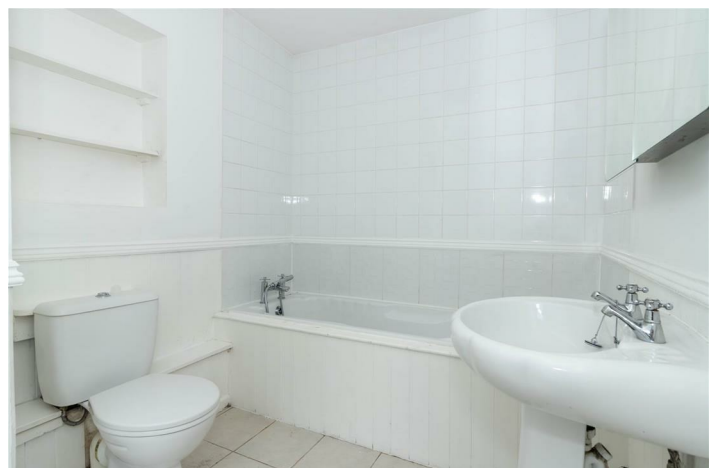
T: 01903 331247 E: [info@robertluff.co.uk](mailto:info@robertluff.co.uk)  
[www.robertluff.co.uk](http://www.robertluff.co.uk)

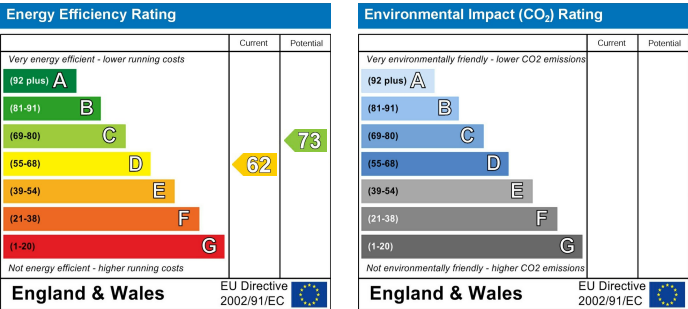
**Robert  
Luff & Co**  
 Sales | Lettings | Commercial





## Accommodation





The information provided about this property does not constitute or form any part of an offer or contract, nor may it be regarded as representations. All interested parties must verify accuracy and your solicitor must verify tenure/lease information, fixtures and fittings and, where the property has been extended/converted, planning/building regulation consents. All dimensions are approximate and quoted for guidance only as are floor plans which are not to scale and their accuracy cannot be confirmed. References to appliances and/or services does not imply that they are necessarily in working order or fit for the purpose.